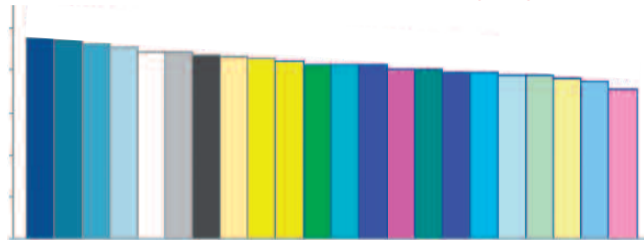


## CRESCITA DELLE VENDITE PROCAPITE ATTRAVERSO I CANALI RETAIL NELLE PROVINCE CINESI: 2008 (in %)



Mongolia cinese  
 Jiangsu  
 Hebei

Zhejiang  
 Shanghai  
 Jilin

Beijing  
 Ningxia  
 Xinjiang

Tianjin  
 Qinghai  
 Hunan

Shandong  
 Chongqing  
 Hubei

Guangdong  
 Tibet  
 Hainan

Fonte: elaborazioni Emasen Consulting

**Largo Consumo**